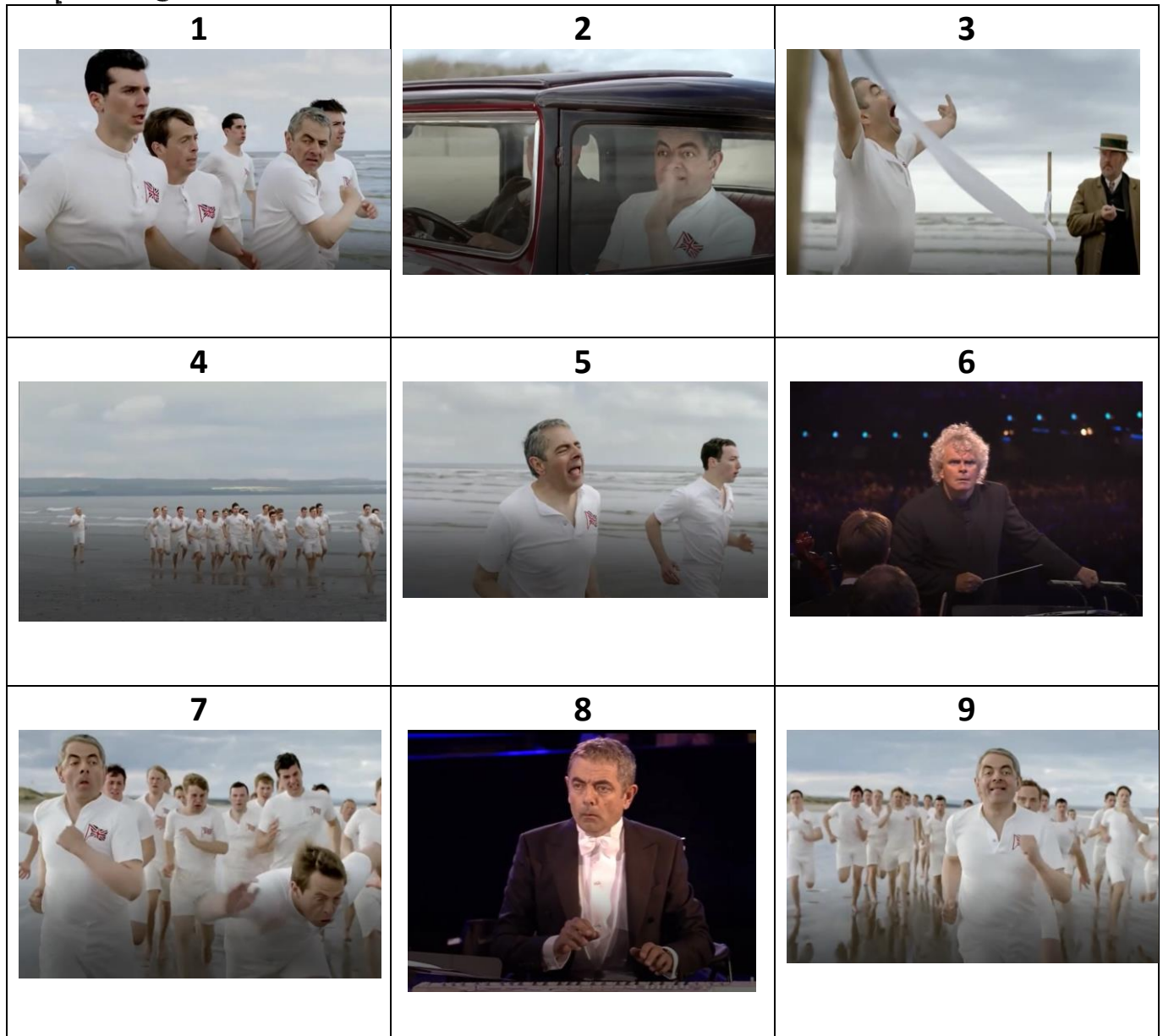


Observe les images puis écoute les phrases et tente d'associer une phrase à chaque image.



- A. Mister Bean realizes that someone is going to pass him.
- B. He gets in a car and passes all the other runners.
- C. The conductor is looking sternly at Mister Bean.
- D. Mister Bean crosses the finish line.
- E. He knocks down another runner.
- F. He is exhausted and everyone passes him.
- G. He wakes up and comes out of his dream.
- H. Now he leads the race.
- I. He finds himself far behind.